



# ATTACHMENT I

## Location Map

Planning & Development  
Services Department



5883 Ames Street  
TMS# 11714-03-15  
(This Structure)

### Legend

- INTERSTATES
- + RAILROADS
- STREETS
- PARCELS
- CITY LIMITS



### ORIGINAL PREPARATION/DATE:

This map was prepared by:  
David L. Hatcher  
December 18, 2009

### DISCLAIMER:

The City of Columbia Department of Planning and Development Services data represented on this map or plan is the product of compilation, as produced by others. It is provided for informational purposes only and the City of Columbia makes no representation as to its accuracy. Its use without field verification is at the sole risk of the user.



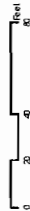
# ATTACHMENT 2

## Location Map

Planning & Development  
Services Department

### Legend

- INTERSTATES
- RAILROADS
- STREETS
- PARCELS
- CITY LIMITS



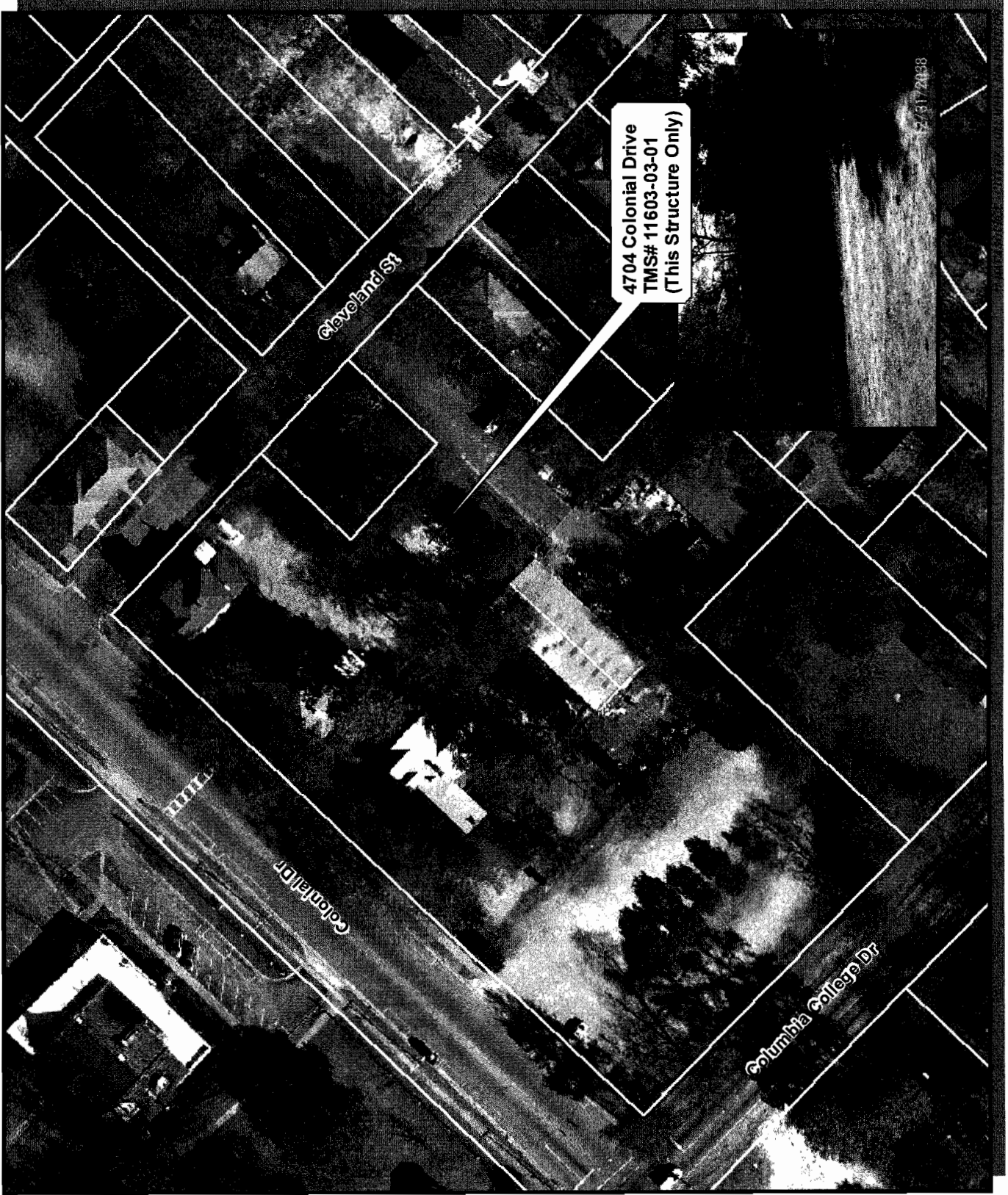
### ORIGINAL PREPARATION/DATE:

This map was prepared by:

David L. Hatcher  
December 22, 2009

### DISCLAIMER:

The City of Columbia Department of Planning and Development Services data represented on this map or plan is the product of compilation, as produced by others. It is provided for informational purposes only and the City of Columbia makes no representation as to its accuracy. Its use without field verification is at the sole risk of the user.



4704 Colonial Drive  
TMS# 11603-03-01  
(This Structure Only)

7/6/17/2038

Location Map

Planning & Development  
Services Department



Legend

- INTERSTATES
- + RAILROADS
- STREETS
- PARCELS
- CITY LIMITS



ORIGINAL PREPARATION/DATE:

This map was prepared by:

David L. Hatcher  
December 18, 2009

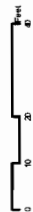
**DISCLAIMER:**  
The City of Columbia Department of Planning and Development Services data represented on this map or plan is the product of compilation, as produced by others. It is provided for informational purposes only and the City of Columbia makes no representation as to its accuracy. Its use without field verification is at the sole risk of the user.



Planning & Development  
Services Department

**Legend**

- INTERSTATES
- RAILROADS
- STREETS
- PARCELS
- CITY LIMITS



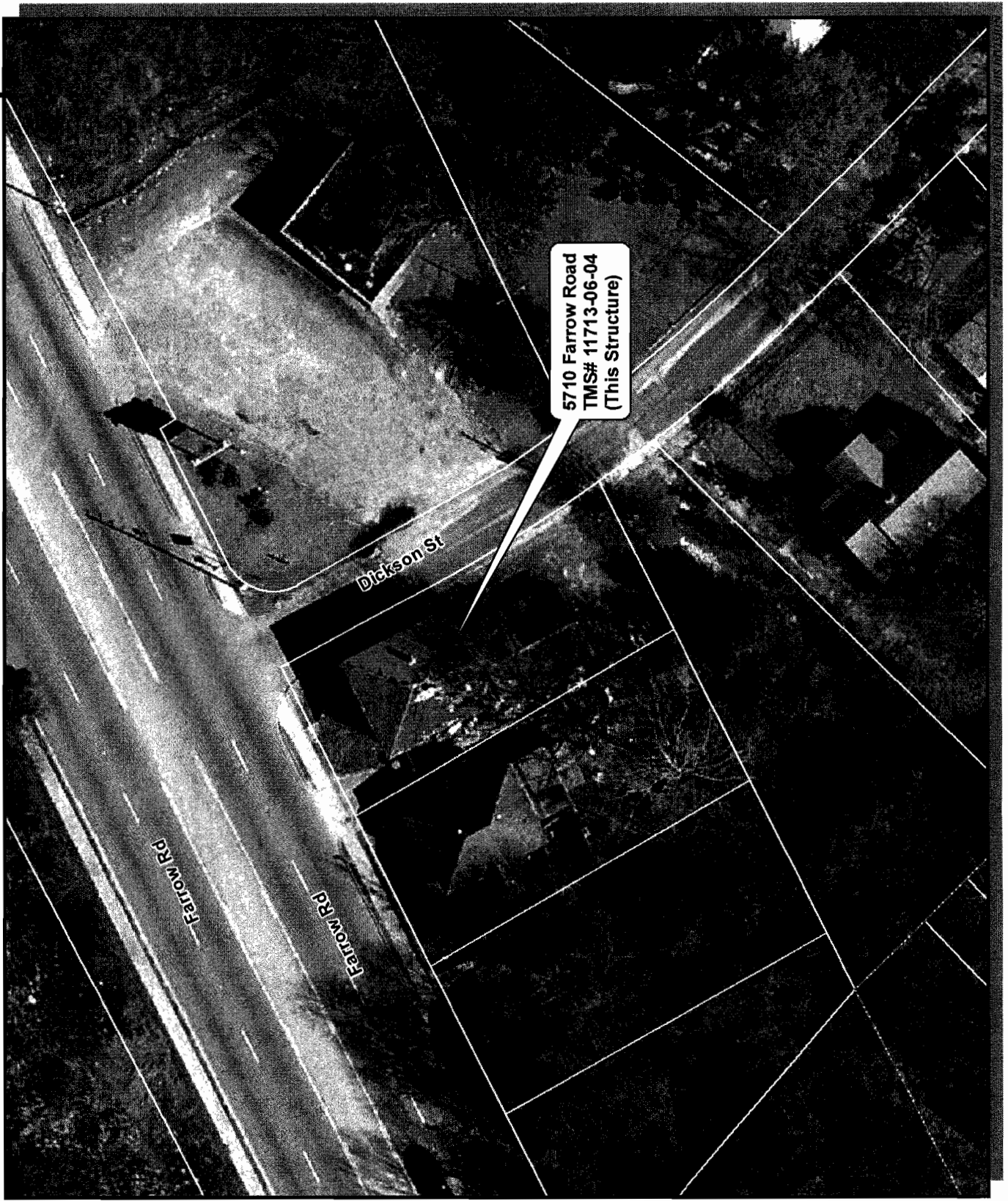
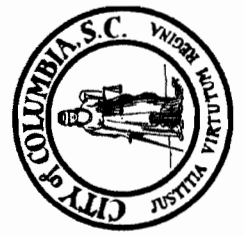
**ORIGINAL PREPARATION/DATE:**

This map was prepared by:

David L. Hatcher  
December 18, 2009

**DISCLAIMER:**

The City of Columbia Department of Planning and Development Services data represented on this map or plan is the product of compilation, as produced by others. It is provided for informational purposes only and the City of Columbia makes no representation as to its accuracy. Its use without field verification is at the sole risk of the user.



5710 Farrow Road  
TMS# 11713-06-04  
(This Structure)

Dickson St

Farrow Rd

Farrow Rd

Location Map

Planning & Development  
Services Department

Legend

- INTERSTATES
- +— RAILROADS
- STREETS
- PARCELS
- CITY LIMITS

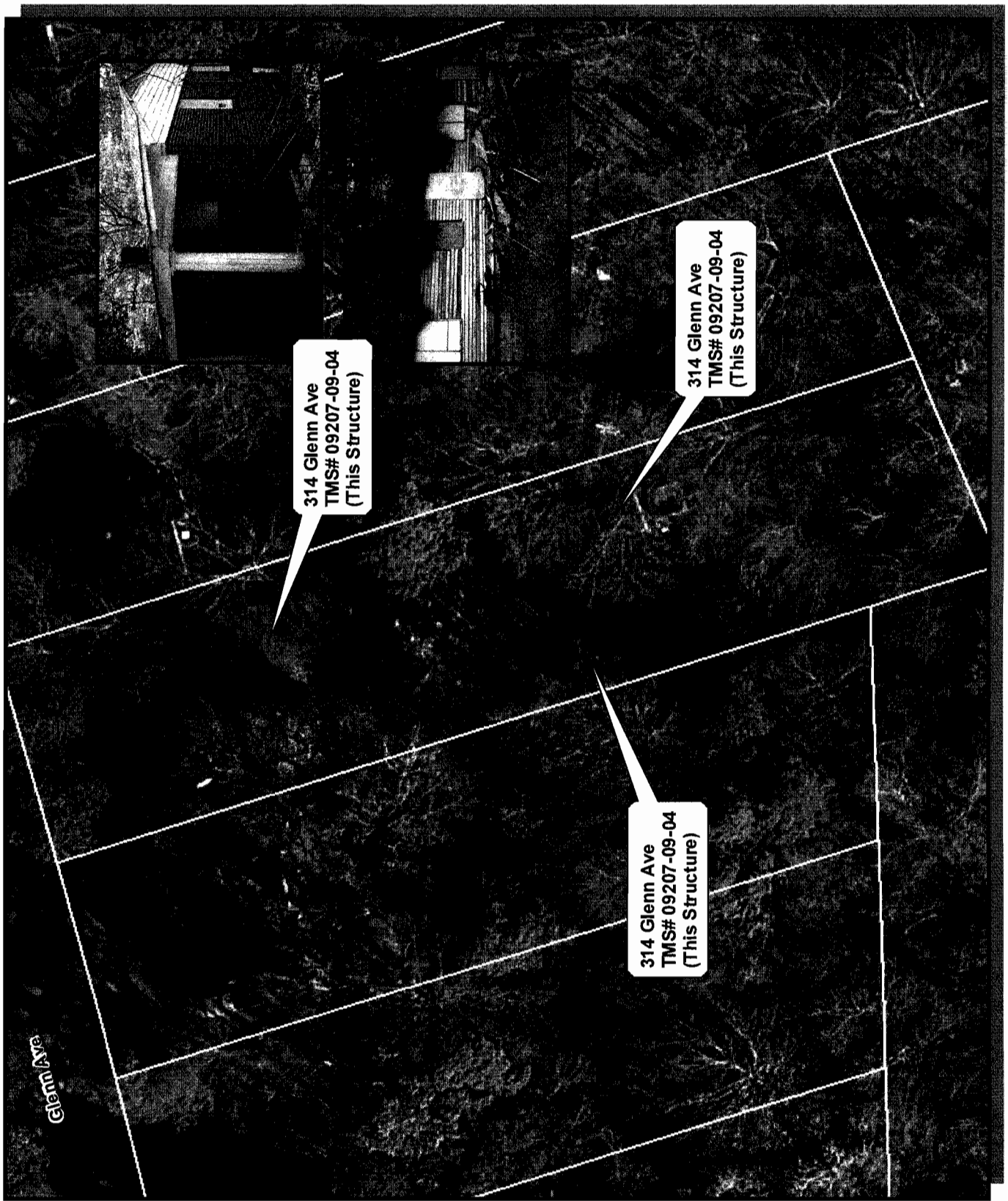


ORIGINAL PREPARATION/DATE:

This map was prepared by:  
David L. Hatcher  
December 22, 2009

DISCLAIMER:

The City of Columbia Department of Planning and Development Services data represented on this map or plan is the product of compilation, as produced by others. It is provided for informational purposes only and the City of Columbia makes no representation as to its accuracy. Its use without field verification is at the sole risk of the user.



## Location Map

Planning & Development  
Services Department

### Legend

- INTERSTATES
- + RAILROADS
- STREETS
- PARCELS
- CITY LIMITS

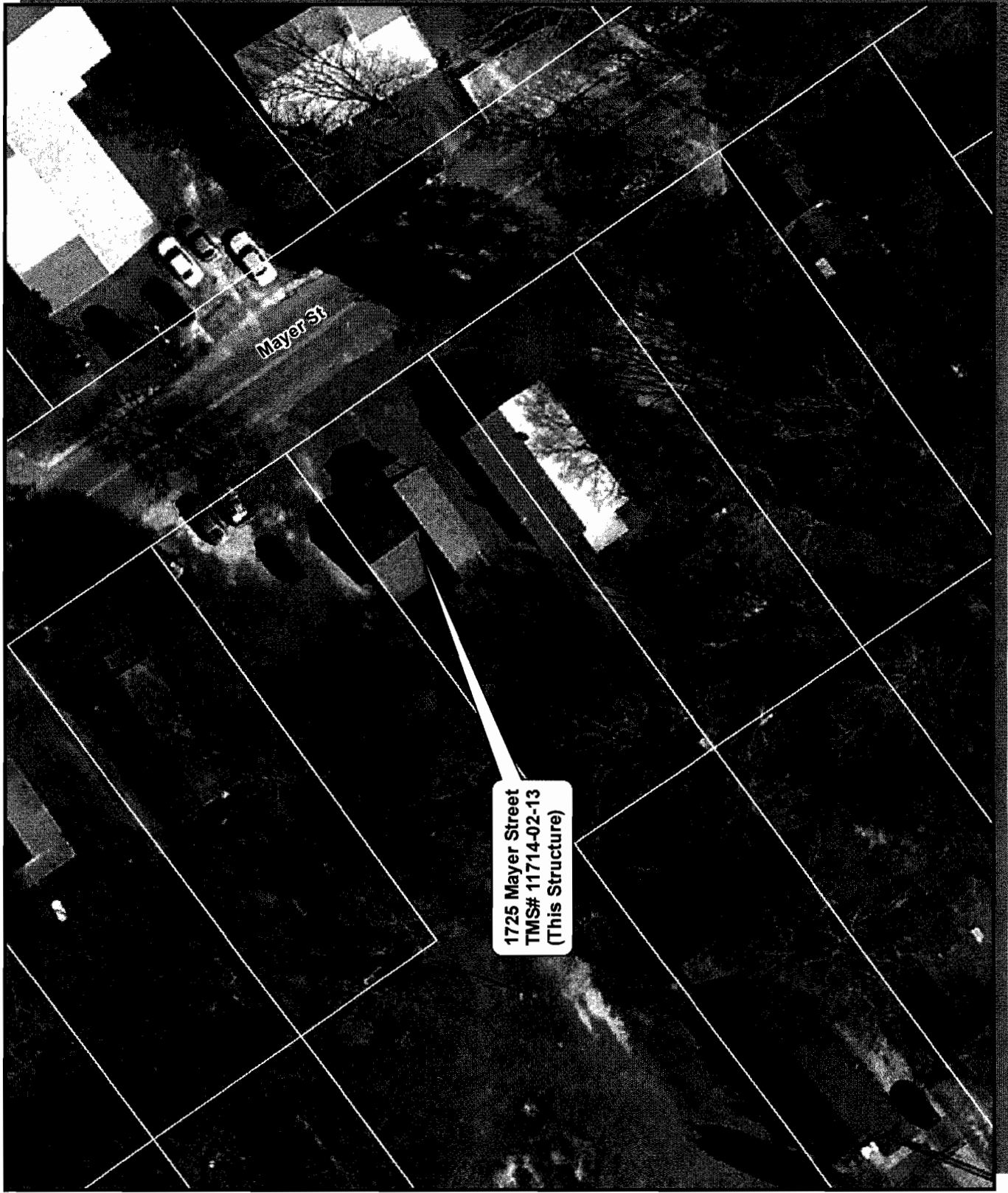


### ORIGINAL PREPARATION/DATE:

This map was prepared by:  
David L. Hatcher  
December 18, 2009

### DISCLAIMER:

The City of Columbia Department of Planning and Development Services data represented on this map or plan is the product of compilation, as produced by others. It is provided for informational purposes only and the City of Columbia makes no representation as to its accuracy. Its use without field verification is at the sole risk of the user.



Planning & Development  
Services Department

### Legend

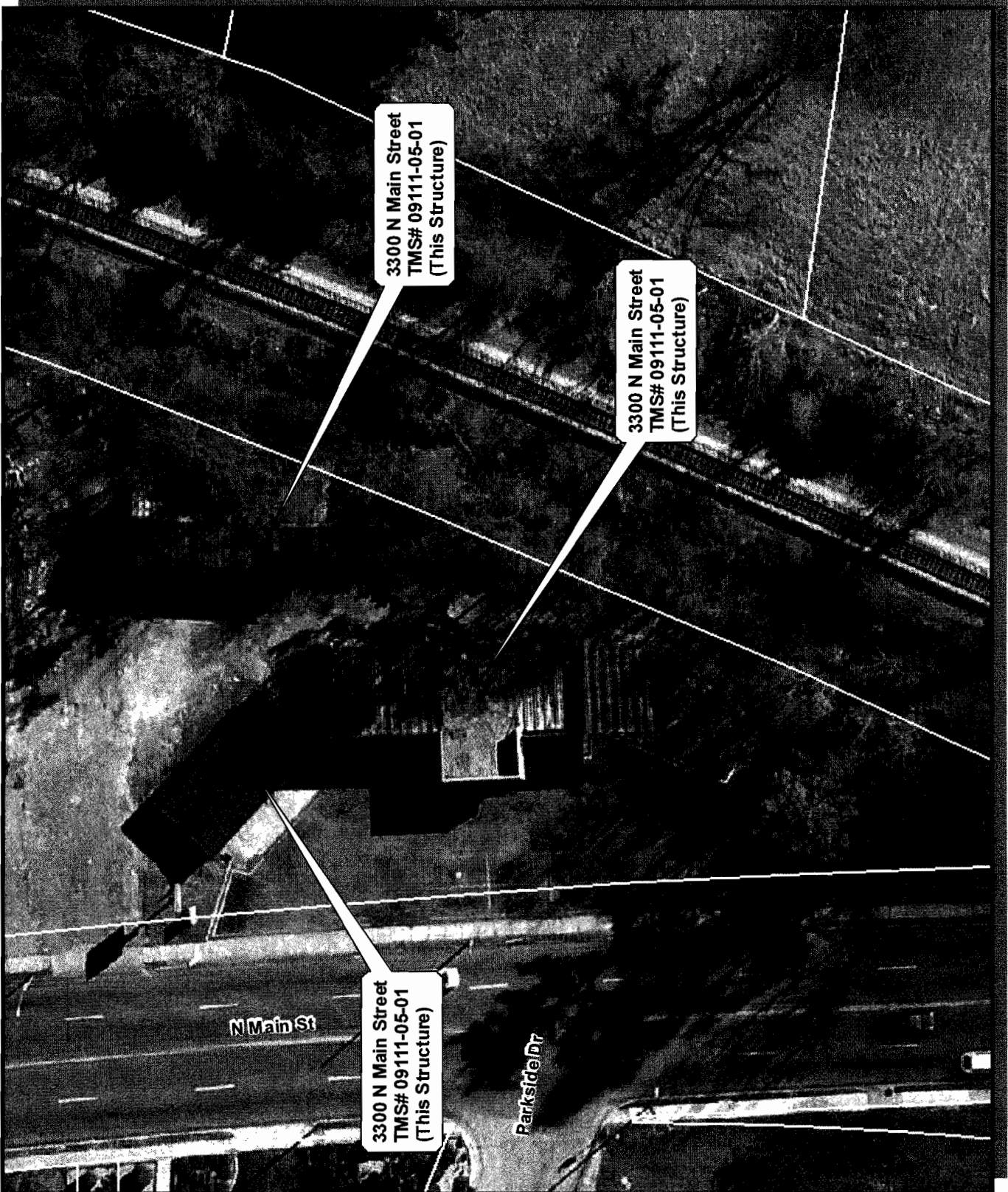
- INTERSTATES
- + RAILROADS
- STREETS
- PARCELS
- CITY LIMITS



### ORIGINAL PREPARATION/DATE:

This map was prepared by:  
David L. Hatcher  
December 22, 2009

**DISCLAIMER:**  
The City of Columbia Department of Planning and Development Services does not represent on this map or plan as the product of compilation, as produced by others. It is provided for informational purposes only and the City of Columbia makes no representation as to its accuracy. Its use without field verification is at the sole risk of the user.



3300 N Main Street  
TMS# 09111-05-01  
(This Structure)

3300 N Main Street  
TMS# 09111-05-01  
(This Structure)

3300 N Main Street  
TMS# 09111-05-01  
(This Structure)